



## Post-Emergence Weed Management

### USE FULL RATES + ADJUVANTS TO GET IT RIGHT THE FIRST TIME

Field conditions this year likely means fewer burndown or PRE herbicide applications, or possibly none at all. The wet weather coupled with quickly warming temperatures means fields will soon be under intense weed pressure if proactive steps aren't taken to preserve yield potential.

University of Minnesota Extension weed scientist Jeff Gunsolus reports that research in Iowa, Minnesota and Wisconsin has shown that 3-4" weeds in **V3-V4 corn can cause an average loss of 3 bushels per acre per day** until the end of June. Early season yield loss is largely due to weeds sequestering nitrogen and making it unavailable to the corn crop. Controlling weeds early is preferred to applying nitrogen later, when yield potential has already been lost. Full herbicide rates plus adjuvants will be key to overcoming aggressive weed growth this year.

#### Mitigate yield losses by considering:

- Rates
  - **Use full rates.** Don't cut corners. Do it right the first time.
  - You may only have one time to get into the field, get the right products and rates to insure good weed control
- Weed size
  - POST Applications should ideally happen when weeds are **less than 4"** tall to preserve yield potential.
- Total vs. Split POST applications
  - Timing and weather can mean one pass may not be enough to adequately control weeds.
  - Additional passes may be needed for weed escapes and late germinating weeds and can mean more complete control.

#### Adjuvants help optimize control

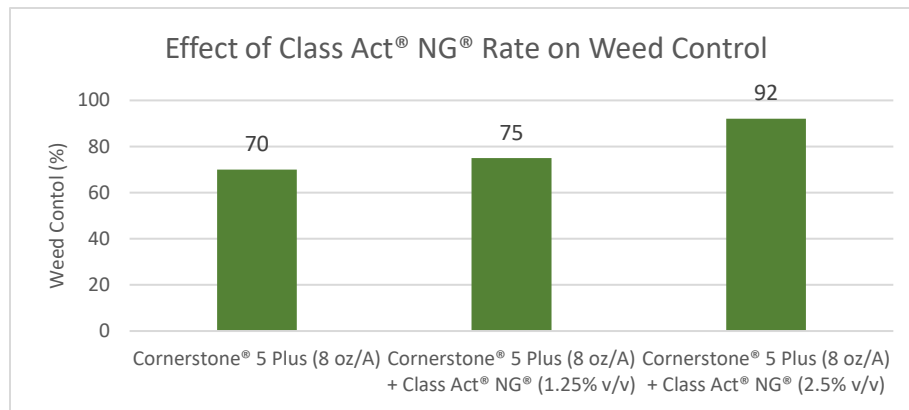
- **Oils** – When weeds get big and hard to control, extra oil in your tank will give your herbicide a bigger punch. 2% v/v will provide better control than 1% v/v, but be aware that it can increase phytotoxicity if crops have started to emerge. StrikeLock® adjuvant or Succeed® Ultra with AccuDrop®, a high surfactant oil concentrate with drift and deposition, is the best choice for heating up oil-loving herbicides for optimal control.



- **Water Conditioners** – Glyphosate is susceptible to antagonism with water, which reduces herbicide efficacy. Class Act® NG®, Class Act® Flex, and Class Act® Ridion® adjuvants help reduce antagonism plus contain the added benefit of CornSorb® technology for optimal uptake and control. Use Class Act NG at 2.5-5% v/v and Class Act Ridion at 1-1.25% v/v to help control unruly weeds. Ultra-Lite® adjuvant at 5% v/v will also help reduced antagonism due to hard water cations.

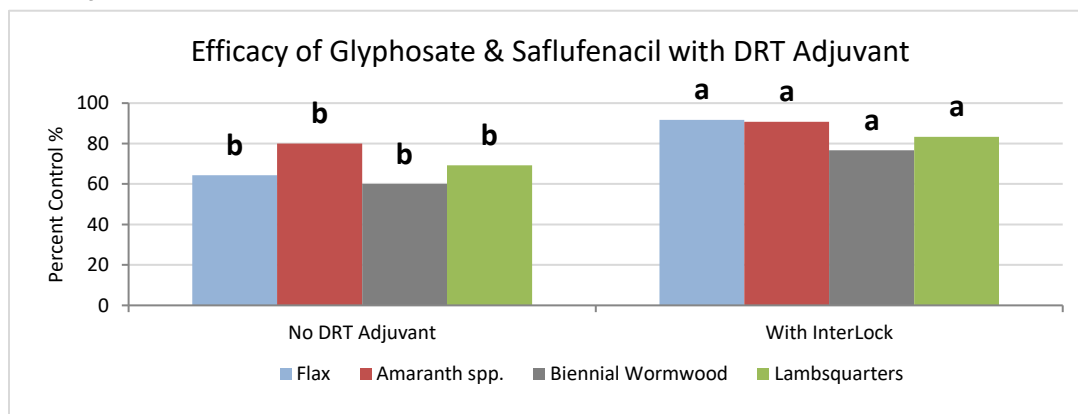
**winfieldunited.com**

ALWAYS READ AND FOLLOW ALL LABEL DIRECTIONS.  
Winfield Solutions, LLC.

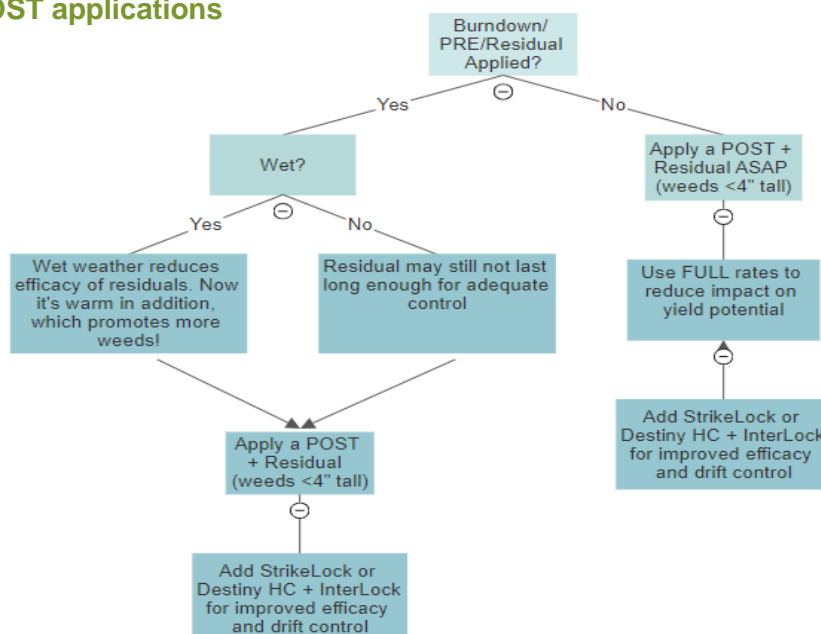


South Dakota Answer Plot® data, 2012

- InterLock® or AccuDrop® Adjuvant – For improve coverage, decreased drift and better weed control, always add InterLock® or AccuDrop® adjuvant to the tank. InterLock or AccuDrop® adjuvant modifies the size of spray droplets to ensure more product gets ONTO the target and INTO the plant for optimized applications.



## Decision tree for POST applications



[winfieldunited.com](http://winfieldunited.com)

ALWAYS READ AND FOLLOW ALL LABEL DIRECTIONS.